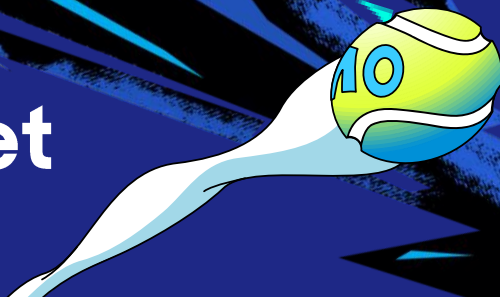


# Wheelchair Fact Sheet

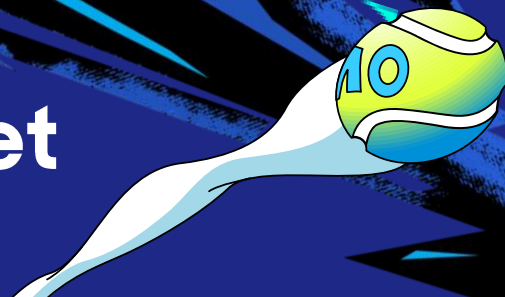
14–28 January



Tournament Dates	Tuesday 23 January 2024 – Saturday 27 January 2024		
Venue	Melbourne Park Batman Avenue Melbourne, VIC 3000	T: +61 3 9914 4000 <a href="#">Event Website: ausopen.com</a>	
Tournament Director	Daniel O'Neill		
AO Referee	Scott Elbin		
Surface	GreenSet Cushion		
Ball	Dunlop Australian Open		
Electronic Review	All match courts will operate ELC Live		
Entry Close Date (EST)	Event	Entry Deadline	How?
	Main Draw Singles (M, W, Q)	Tuesday, 12 December 2023	Via online entry form <a href="#">click here</a>
Draw Size / Format	Event	Draw Size	Format
	Men's Singles	16	Best of 3 sets
	Women's Singles	16	Best of 3 sets
	Quad Singles	16	Best of 3 sets
	Men's Doubles	8 pairs	Best of 2 sets, 3rd set match tiebreak, no ad scoring
	Women's Doubles	8 pairs	Best of 2 sets, 3rd set match tiebreak, no ad scoring
Draw Dates	Event	Date	Time
	Main Draw Singles Main Draw Doubles	Saturday, 20 January 2024 Saturday, 20 January 2024	TBC TBC
Schedule	Event	Start Date	Finals Date
	Main Draw Men's Singles	Tuesday, 23 January 2024	Saturday, 27 January 2024
	Main Draw Women's Singles	Tuesday, 23 January 2024	Saturday, 27 January 2024
	Main Draw Quad Singles	Tuesday, 23 January 2024	Saturday, 27 January 2024
	Main Draw Men's Doubles	Wednesday, 24 January 2024	Friday, 26 January 2024
	Main Draw Women's Doubles	Wednesday, 24 January 2024	Friday, 26 January 2024
Prize Money	Event	Start Date	Finals Date
	Main Draw Quad Doubles	Wednesday, 24 January 2024	Friday, 26 January 2024
Prize Money	<ul style="list-style-type: none"><li>• Prize money will be paid in Australian Dollars at the end of the tournament to the ATP/WT, to then be distributed to players' nominated bank accounts</li><li>• Local Tax withholding rates for Non-Residents: \$0 – \$120,000 (32.5%), \$120,001 – \$180,000 (37.0%), \$180,001 + (45.0%)</li><li>• All non-residents who play the AO can complete an Australian tax return with the Australian Taxation Office after completion of play at the AO if their earnings are above the threshold for tax. If their total Australian earnings are below a certain threshold, taxes withheld at lead-in events will be automatically refunded via AO Prize Money. The Prize Money Office will advise each player if they need to do their taxes or if they are being refunded.</li><li>• Any player who does not play AO will be separately assessed and contacted by the Prize Money Office to complete an Australian tax return or to receive a tax refund if applicable.</li><li>• Players competing at the AO for the first time should contact <a href="mailto:prizemoney@tennis.com.au">prizemoney@tennis.com.au</a> for assistance setting up an Australian Tax number (ABN).</li><li>• For Prize Money receipts please contact <a href="mailto:prizemoney@tennis.com.au">prizemoney@tennis.com.au</a></li></ul>		
Wildcards	Wildcard requests must be received by Tuesday, 12 December 2023 Players wishing to apply for a wildcard into any event at the Australian Open should use the following link: <a href="#">Wildcard Application</a>		

# Wheelchair Fact Sheet

14–28 January

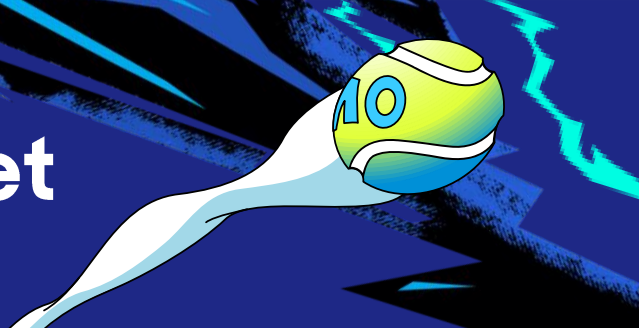


## Pre-Arrival & Key Benefits

Visa	Please see visa information on <a href="https://absoluteimmigrationtennis.com/visa-information/">https://absoluteimmigrationtennis.com/visa-information/</a> Request your Letter of invitation at <a href="https://absoluteimmigrationtennis.com/letter-of-invitation/">https://absoluteimmigrationtennis.com/letter-of-invitation/</a> <b>Deadline:</b> 20 November 2023
Accommodation	<ul style="list-style-type: none"> <li>Australian Open Accommodation Office is open from Monday 2 October 2023</li> <li><b>Deadline for hotel bookings: 4 December 2023</b></li> <li>To book accommodation and for further information, please visit <a href="https://accom.tennisevents.com.au">accom.tennisevents.com.au</a> or contact <a href="mailto:accommodation@tennis.com.au">accommodation@tennis.com.au</a></li> </ul>
Travel Grant	<ul style="list-style-type: none"> <li>All main draw players will receive a \$5000AUD travel subsidy grant with their prizemoney.</li> </ul>
Per Diem	<ul style="list-style-type: none"> <li>All main draw players will receive a per diem of AUD \$330 per day starting on the first day of the draw in which you are competing until the day of your elimination, plus three (3) days.</li> </ul>
Accreditation	<ul style="list-style-type: none"> <li>Accreditation is required from Thursday 4 January 2024 (first day on site will be Friday 19<sup>th</sup> January)</li> <li>Wheelchair Main Draw Allocation: Player + 3 PST*</li> <li>Players under 18 years of age are permitted to bring one (1) parent or legal guardian which does not count towards their allocation of 3 PST accreditations.</li> <li>Players with children are permitted to bring their children and one (1) person whose primary role is caregiver for those children. The caregiver's pass does not count towards the players allocation of 3 PST accreditations.</li> <li>Any minor (11 years and under) who a player is the legal guardian of (i.e., direct children of players) are not counted towards their allocation of 3 PST accreditations.</li> <li>Any other minors (11 years and under) who are not the children of a player (e.g., the children of a PST member or other guests) can be allocated a PST accreditation, however this will count towards the allocation of 3 PST accreditations to a player.</li> <li>No accreditation for the Player, Coach or Guest will be provided until the Player has agreed to the Australian Open Player Registration form and Accreditation Terms and Conditions. This link will be live from 15 November 2023</li> <li><b>Accreditation deadline is 22 December 2023.</b></li> <li>Players must pre-nominate via the online accreditation and registration form prior to travelling to Australia.</li> <li>Accreditation is valid for all Players and their PSTs until two (2) days after the day of elimination from the tournament. Players can apply for an Out of Tournament Pass that will enable them to continue practicing onsite. All team members' passes will be cancelled when the player physically departs Melbourne.</li> <li>Players participating in the AO for the 1st time will only be able to collect their Accreditation pass once they have successfully applied for an Australian Business Number (ABN) – please contact <a href="mailto:prizemoney@tennis.com.au">prizemoney@tennis.com.au</a></li> <li>Players are responsible for the behaviour of their guests and any unsuitable behaviour may result in the confiscation of Guest accreditation passes</li> </ul> <p><i>*Accreditation nominations are final and non-transferable once collected.</i></p>
Airport Transfer	<ul style="list-style-type: none"> <li>Fly into Melbourne Airport (MEL-Tullamarine), distance from airport to city center (CBD) is about 23 km</li> <li>Airport transfer is available from Thursday 4 January please book via the AO Transport</li> </ul>
Transport	<ul style="list-style-type: none"> <li>Tournament transport will be available from Friday 19 January 2024 until Monday, 29 January 2024, 3pm</li> <li>Transport is available for players provided they are staying within a 15km radius of Melbourne Park</li> <li>Players will be able to <b>download the AO Transport App from Friday 15 December 2023</b>. You must complete your Summer of Tennis Accreditation Form (see Accreditation above) prior to downloading the App as this will activate your profile. Those with an active accreditation pass will be able to login using the email address provided. A One Time Password (OTP) will be sent to this address to complete your login</li> <li>For App login issues, please contact <a href="mailto:playeraccreditation@tennis.com.au">playeraccreditation@tennis.com.au</a> to check your pass is active.</li> <li>This App will be used across all Australian Tournaments so please check the city is correct before making your booking.</li> <li>Transport email: <a href="mailto:gotransport@tennis.com.au">gotransport@tennis.com.au</a></li> <li>Transport number +61 3 9914 4641 (phone number available from Thursday 4 January 2024)</li> </ul>
Meal Allowance	<ul style="list-style-type: none"> <li>Player's meal allowance is AUD\$100 per day and automatically applied to their accreditation pass.</li> <li>Each nominated PST members (to a maximum of 3 PSTs) will receive \$50 applied to their accreditation passes per day.</li> <li>Any difference, once the daily credit has been spent, must be paid for by the user. This can be used at all dining outlets within the Player Areas</li> <li>All Meal Allowances start on the day of arrival (and no earlier than Friday 19 January 2024) and ends two days after the player's final match.</li> <li>The Meal Allowance cannot be used for the purchase of takeaway food or alcohol in the Player Dining Areas</li> <li>Lucky Losers receive AUD\$100 EMA per day until the end of all first round Main Draw Singles matches.</li> <li>Alternates will receive AUD\$100 EMA per day until the end of all first round Main Draw Doubles or Mixed Doubles matches (as applicable)</li> </ul>
Stringing	<ul style="list-style-type: none"> <li>All qualifying and main draw players will receive 5 free restrings per round for every round they play in the competition. Any restrings above the 5 per round will be charged at AUD \$32/racquet and will be charged via the player's prize money.</li> </ul>

# Wheelchair Fact Sheet

14–28 January



## On-site Services

	Date	Time	Location	Contact
<b>Player Services</b>	Thu 4 Jan – Sun 7 Jan Mon 8 Jan – Thu 25 Jan Fri 26 Jan – Sun 28 Jan	9am – 8pm 8am – ½ hr after EOP 9am – ½ hr after EOP	Transport Waiting Lounge	T: +61 3 9914 4578 E: <a href="mailto:playerservices@tennis.com.au">playerservices@tennis.com.au</a>
<b>Barber</b>	Mon 8 Jan – Tue 23 Jan	11am – 5:30pm	RLA Level 1	T: +61 432 755 820 or contact Player Services after opening hours
<b>Beauty Bar</b>	Mon 8 Jan – Sun 28	10am – 6pm	RLA Level 1	T: +61 432 755 820 or contact Player Services after opening hours
<b>Childcare</b>	Mon 8 Jan – Sat 13 Jan Sun 14 Jan – Fri 26 Jan Sat 27 Jan – Sun 28 Jan	10am – 6pm 10am – 8pm 12pm – 6pm	RLA Level 1	T: +61 3 9914 4609
<b>Laundry</b>	Thu 4 Jan – Sat 27 Jan Sun 28 Jan	Times posted in change rooms <i>Sun 28 Jan – only returns, no drop off</i>	RLA Change Room	
<b>Medical</b>	Thu 4 Jan – Sun 7 Jan Mon 8 Jan – Thu 11 Jan Fri 12 Jan – Sat 13 Jan Sun 14 Jan – Sun 28 Jan	9am – 7pm 9am – ½ hr after EOP 9am – 6pm 9am – ½ hr after EOP	RLA Level 1	T: +61 3 9914 4698
<b>Physio / Massage Therapists</b>	Thu 4 Jan – Sun 7 Jan Mon 8 Jan – Thu 11 Jan Fri 12 Jan – Sat 13 Jan Sun 14 Jan – Sun 28 Jan	9am – 5pm 9am – ½ hr after EOP 9am – 6pm 9am – ½ hr after EOP	Player Treatment Rooms	Women's Physio Room: T: +61 3 9914 4668 Men's Physio Room: T: +61 3 9914 4669
<b>Player Accreditation and Ticketing</b>	Thu 4 Jan – Sun 21 Jan Mon 22 Jan – Sun 28 Jan	7am – 10pm 8am – 10pm	RLA Level 1	T: +61 3 9914 4566
<b>Player Dining – Level 3 RLA</b>	Thu 4 Jan – Sun 7 Jan Mon 8 Jan – Sat 13 Jan Sun 14 Jan – Thu 25 Jan Fri 26 Jan – Sun 28 Jan	8am – 6pm 7:30am – 9pm or ½ hr after EOP 7:30am – 12am or ½ hr after EOP 9am – 12am or ½ hr after EOP	RLA Level 3	
<b>Practice Desk</b>	Thurs 4 Jan – Sun 28 Jan	7am – 9pm	RLA Level 1	T: +61 3 9914 4580 E: <a href="mailto:appractice@tennis.com.au">appractice@tennis.com.au</a> Courts available from 4 Jan
<b>Prize Money</b>	Mon 9 Jan – Fri 13 Jan Sat 14 Jan (if no play) * Sun 14 Jan – Fri 26 Jan Sat 27 Jan – Sun 28 Jan	9am – 7pm 11am – 3pm * If play occurs hours will be 9am– 7pm 9am – 7pm 10am – 7pm	RLA Level 1	E: <a href="mailto:prizemoney@tennis.com.au">prizemoney@tennis.com.au</a>
<b>Stringer</b>	Thurs 4 Jan – Sun 7 Jan Mon 8 Jan – Thurs 11 Jan Fri 12 Jan – Sat 13 Jan Sun 14 Jan – Sun 29 Jan	9am – 5pm 7am – 1 hour after EOP 9am – 5pm 7am – 1 hour after EOP	RLA Level 1	T: +61 3 9914 4583
<b>Seamstress</b>	Mon 8 Jan – Mon 22 Jan	10am – 5pm	RLA Level 1	
<b>Tax Office (ATO)</b>	Sun 14 Jan – Sun 29 Jan	9am – 7pm	RLA Level 1	TBA
<b>Travel</b>	Mon 8 Jan – Sat 13 Jan Sun 14 Jan – Thu 25 Jan Fri 26 Jan Sat 27 Jan – Sun 28 Jan	10am – 6pm 10am – 8pm 10am – 6pm 11am – 6pm	Virtual office	T: +61 2 9250 9323 E: <a href="mailto:Tennisevents.au@reedmackay.com">Tennisevents.au@reedmackay.com</a>

### Terms and Conditions

Participation in the Australian Open 2024 is subject to the terms and conditions of the Player Registration Form.

The information in this Fact Sheet is accurate as of 20 October 2023, the date of publication, but is subject to change without notice.